

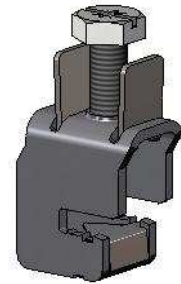


Technical Data Sheet

Date: 2013-02

Page: 1 of 1

Busbar Terminals SK 16..., SK 35..., SK 50..., SK 70..., SK 120..., SK 185..



Application	terminal for the connection of solid or stranded wires to busbars
Standards	IEC 60999 "Connecting devices for low-voltage circuits for household and similar purposes" for fixed installation.
Connection	SK 16: 1.5...16 mm ² solid / stranded SK 35: 1.5 35 mm ² solid / stranded SK 50: 1.5 50 mm ² solid / stranded SK 70: 4...70 mm ² solid / stranded SK 120: 16...120 mm ² solid / stranded SK 185: 35...185 mm ² solid / stranded ...-F5: 5 mm busbar ...-F10: 10 mm busbar
Material	high grade steel
Clamping screw	SK 16: M5 - slotted head / cross recess Z2 SK 35: M6 - hexagon head, slotted incl. cross recess Z3 SK 50: M6 - hexagon head, slotted incl. cross recess Z3 SK 70: M8 - hexagon head, slotted incl. cross recess Z3 SK 120: M10 - hexagon head, slotted incl. cross recess Z3 SK 185: M10 - hexagon head, slotted incl. cross recess Z3
Recommended torque	SK 16: 4 Nm SK 35: 10 Nm SK 50: 10 Nm SK 70: 20 Nm SK 120: 30 Nm SK 185: 30 Nm
Coating	ISO 4021 A3K (zinc plated-blue chromated) for indoor use
Safety	edges rounded
Environment	all materials and manufacturing processes comply with RoHS regulations
Accessories	-